

**Person-Target Profiling in I/O applications: The Logic, Methodologies, and Optimal Contexts.**

**Paul Barrett**

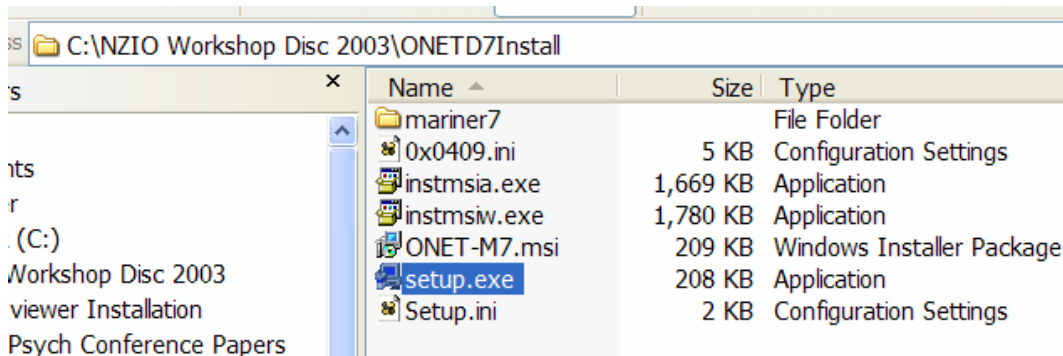
Director of Research and Development, Psytech International (UK) Ltd.  
 Adjunct Professor of Psychometrics and Performance Measurement, Faculty of Business, Uni. Of Auckland (NZ)  
 Adjunct Associate Professor of Psychology, Dept. of Psychology, Uni. Of Canterbury (NZ)  
[www.pbarrett.net](http://www.pbarrett.net)  
[paul.barrett@psytech.co.nz](mailto:paul.barrett@psytech.co.nz)

**Workshop CD File-Listing**

The CD contains approximately 260Mb of files ... **ALL VIRUS checked via latest Norton Antivirus software.**

<div style="border: 1px solid black; padding: 2px; display: inline-block;">program</div>	<ul style="list-style-type: none"> <li>AVIviewer Installation</li> <li>NZ Psych Conference Papers</li> <li>ONET 4 Documents</li> <li>ONET 4 Masters</li> <li>ONETD7Install</li> <li>Personality Profiler Installation</li> <li>Profile Similarity Installation</li> <li>Profile-to-Profile Accelerated 2-D Distance Installation</li> <li>Prototype Profiles Installation</li> <li>SIOPSA Keynote Address and Associated Files</li> <li>2-Dimensional Order-Constrained Profiling.doc</li> <li>Ackerman and Cianciolo - TRACON etc. 2000.pdf</li> <li>Ackerman and Heggstad - 1997 Trait complexes.pdf</li> <li>Assessing whole candidate - Highhouse -Personnel Psych 2002.pdf</li> <li>Barrett and Paltiel - POP - sdr 1996.pdf</li> <li>Beyond Psychometrics JOMP 2002-Augmented.doc</li> <li>Briefing Doc#1 - ONET within StaffCV.doc</li> <li>CD Layout.doc</li> <li>GeneSys Profiling Coefficient Analysis #2.doc</li> <li>Likert Response Range and Correlation Attenuation.doc</li> <li>M7icon.bmp</li> <li>ONET Overview - Personnel Psychology 2001.pdf</li> <li>OnetStaffM7 Program Documentation.doc</li> <li>ppview.bmp</li> <li>Profile Similarity Documentation &amp; Installation Instructions.doc</li> <li>wordicon.bmp</li> <li>Workshop Presentation - Part 1.ppt</li> <li>Workshop Presentation - Part 2.ppt</li> <li>Workshop Presentation - Part 3.ppt</li> </ul>	<p>1,779 KB                  4,466 KB                  2,517 KB                  1,820 KB                  307 KB                  229 KB                  142 KB                  25 KB                  784 KB                  700 KB                  16 KB                  1,753 KB                  678 KB                  28 KB                  331 KB                  28 KB                  3,456 KB                  1,383 KB                  809 KB</p>
--	---	---

There are 6 program installations ... all are self-installing using the "setup.exe" file contained within each subdirectory ... e.g.



Documentation exists either as online help files, separate files such as those in the above main directory, or is contained within the program subdirectory (such as the Coefficient Distribution Analyzer Manual.pdf). The AVI viewer installation program directory also contains the AVI (video) files used in several of the workshop and paper presentations. It is simply a dedicated utility program that avoids any problems with viewing AVI files on any PC.